



Soil Creativity
Exposed panel
general catalog 2024

venusstone.ir

+98 264 45 64 138

+98 936 78 22 806

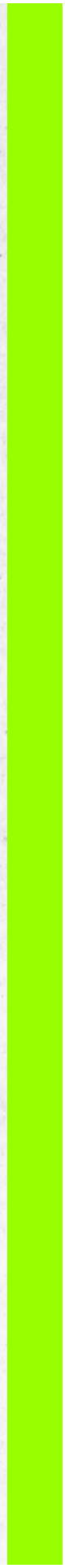
VENUS stone st,
Khalijfars Blv,
Payam Blv, Karaj - IRAN

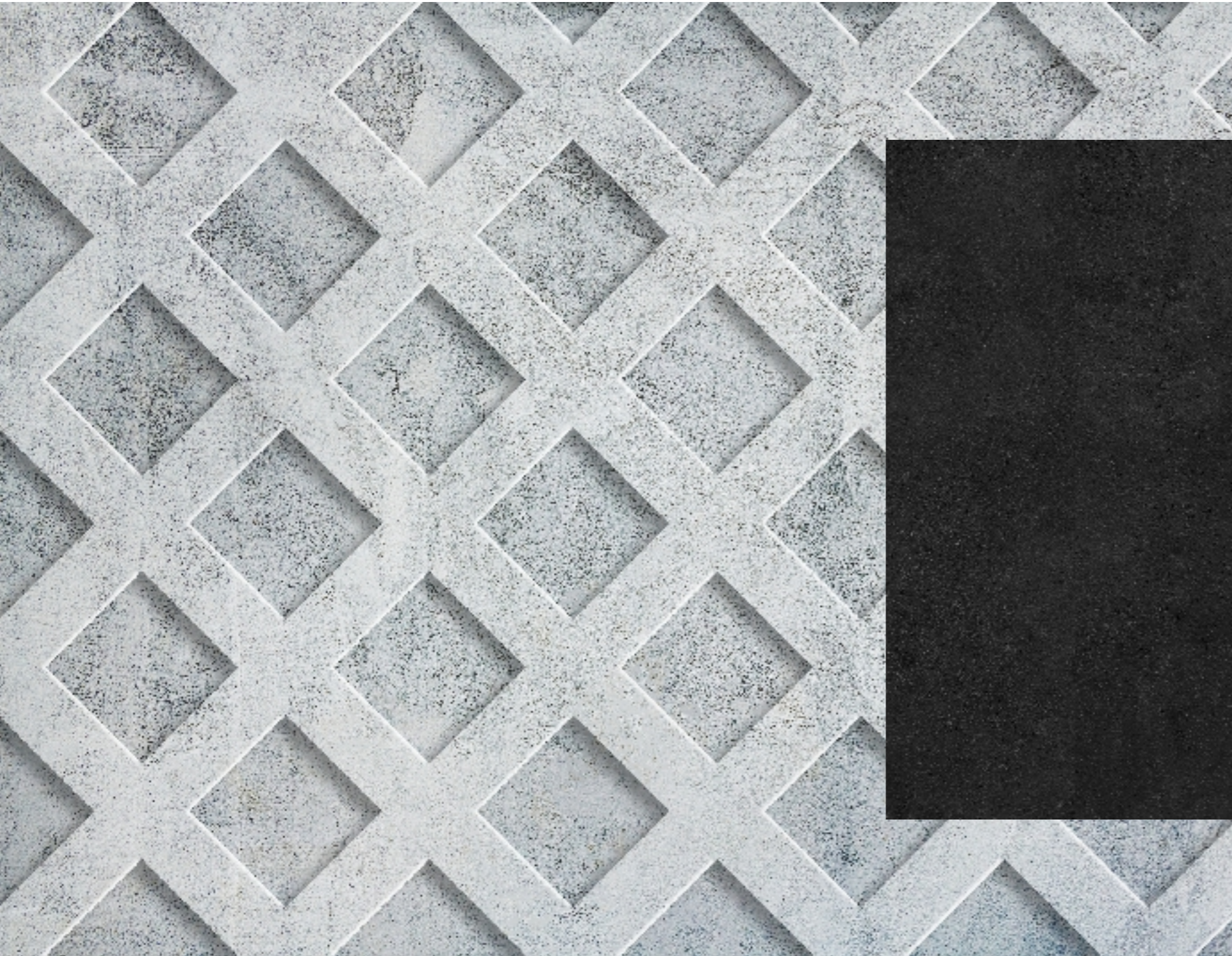


VENUS
stone



Soil Creativity





Creators are most familiar with soil
The first human creations were made of soil. Many consider soil to be the most important element of creation. The art of working with this basic element is one of the most stable in order to perpetuate the scene. What is a static message from the heart of nature. A combination of creativity, aesthetics, art and science that creates endurance for thousands of years.
Concrete is the most mature of this main industry. The combination that brings the mountain under the feet is the most durable, it brings the certainty of stepping on the surfaces to the utmost and it causes relaxation.
Venus Stone knows the soil from a genuine background in the industry, has trodden the mountain under its feet, and is looking for an incomparable quality resulting from science, industry and art.
Venus stone, soil creativity

Test results by the laboratory

Test results by the laboratory

Compressive strength: 850 kg/cm

Bending strength: 118 kg/cm

4% water absorption

Surface water absorption: 0.147 g/cm

Resistance to freezing: No cracking or falling of seeds was observed.



Technical Characteristics مشخصات فیزیکی و مکانیکی	Compressive strength Kgs/Sq.m. مقاومت فشاری	Tensile Strength Kgs/Sq.m. مقاومت خمشی	Wearability Of surface g/sq.m. مقاومت سایشی	Water Absorption جذب آب
Products form Natural granite Of GOST 9479-98 سنگهای گرانیت	1000	-	0.2 - .05	1%
concrete armed بتن مسلح	600 - 1000	100 - 150	0.4	4%
Products form Natural marble Of GOST 9479-98 سنگهای مرمریت	500	-	0.5 - 1.2	1%
Products of Vibrocompression Of melli IRAN 755 محصولات پرسی و ویبره ای در استاندارد ملی ایران	250	50	2.5	8%
Ordinary concrete بتن معمولی	300	60	3.2	12%
Products of Vibrocompression Of GOST 17608-91 محصولات پرسی و ویبره ای	400	40	0.7 - 0.9	6

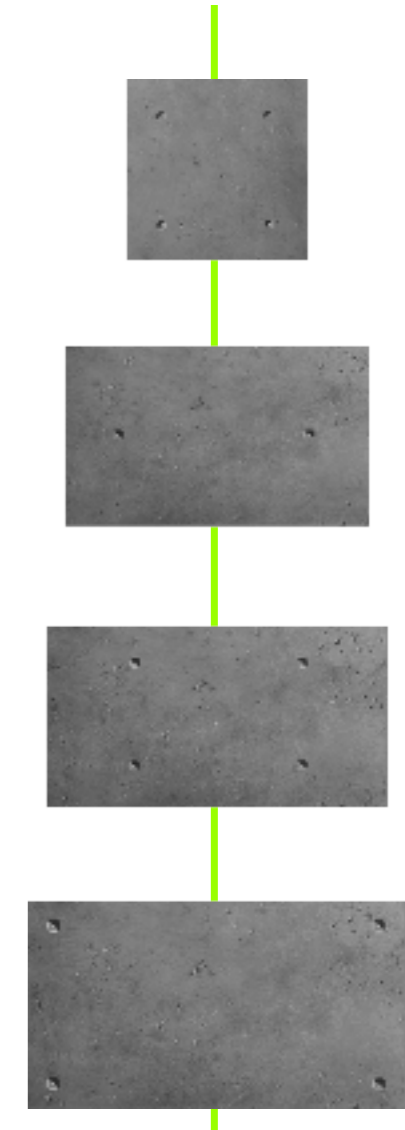
Exposed Betone




Bolt panel

- 60x120
- 50x100
- 50x90
- 45x85
- 50x50

-  3 cm thick, armed with ar and micro synthetic fibers
-  3 cm thick, armed with PP fibers



- White 
- Light gray 
- Dark gray 

See in Website & Order

Visible and simple

Bolt Panels is used for exterior and interiors.
 It is produced in the dimensions of
 60x120 cm, 100x50 cm, 90x50 cm, 45x85 cm, 50x50 cm
 with 3cm thickness of armed with ar and micro synthetic fibers and 3 cm with pp fibers.
 three colors: gray, dark gray and white

Nika panel is used for exterior and interiors.
This product can be produced in other colors according to the order

A balance of repetition



Nika Panel

60 x 120 cm

- 3 cm thick, armed with ar and micro synthetic fibers
- 3 cm thick, armed with PP fibers



White 

Light gray 

Dark gray 

Exposed panel

5

See in Website
& Order

VENUS
stone

Bambo Panel

60 x 100 cm

- 3 cm thick, armed with ar and micro synthetic fibers
- 3 cm thick, armed with PP fibers

White 

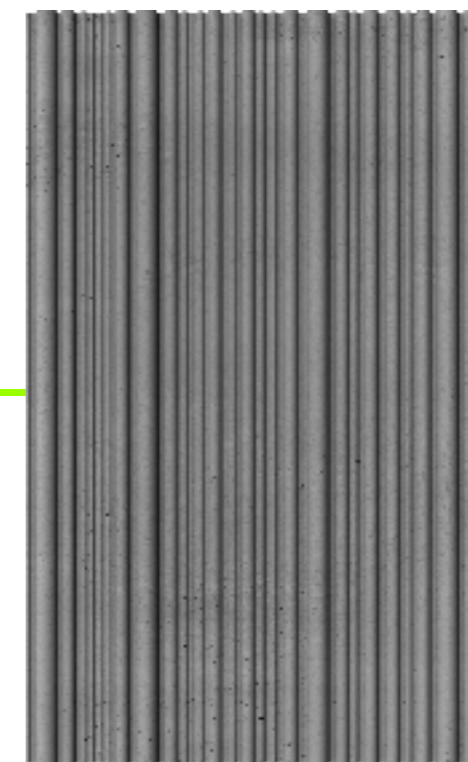
Light gray 

Dark gray 

A line from nature



Exposed panel

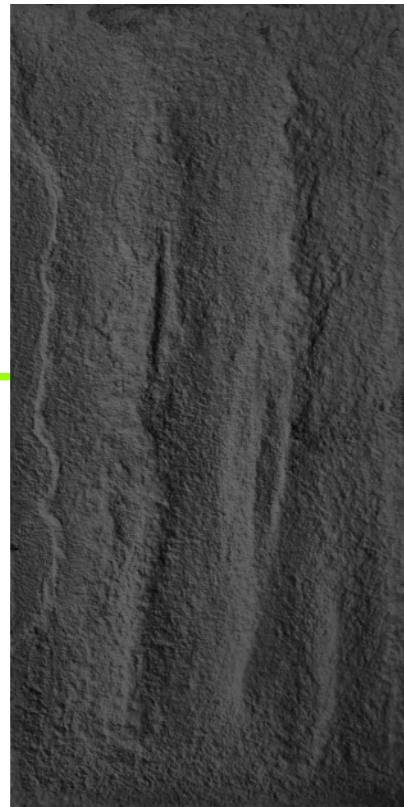


See in Website
& Order

VENUS
stone

Bambo panel is used for exterior and interiors.
This product can be produced in other colors according to the order

Dash



feel the mountain

Bard


58 x 118 cm

- 3 cm thick, armed with ar and micro synthetic fibers
- 3 cm thick, armed with PP fibers

Bard panel is used for exterior and interiors.
This product can be produced in other colors according to the order

White 

Light gray 

Dark gray 

Exposed panel


Dash


58 x 118 cm

- 3 cm thick, armed with ar and micro synthetic fibers
- 3 cm thick, armed with PP fibers

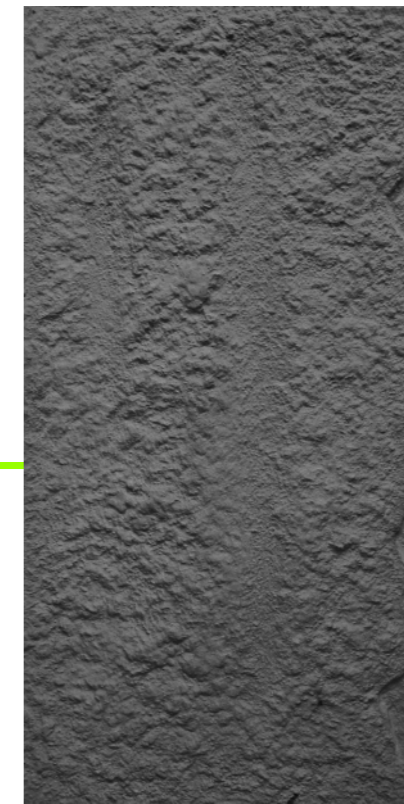
Dash panel is used for exterior and interiors.
This product can be produced in other colors according to the order

White 

Light gray 

Dark gray 

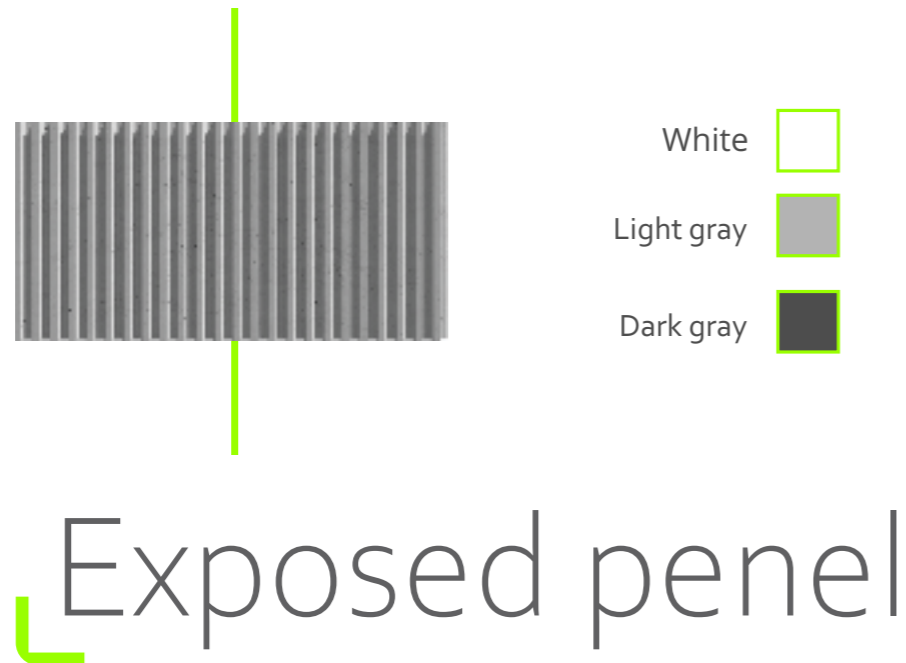
Bard



hard landscape

See in Website & Order

Bambo panel is used for exterior and interiors.
This product can be produced in other colors according to the order



Exposed panel

Nill panel is used for exterior and interiors.
This product can be produced in other colors according to the order

Accurate and huge

Nill Panel

60 x 120 cm

- 3 cm thick, armed with ar and micro synthetic fibers
- 3 cm thick, armed with PP fibers



See in Website
& Order

Exposed panel



Alborz Panel

25 x 120 cm

- 3 cm thick, armed with ar and micro synthetic fibers
- 3 cm thick, armed with PP fibers



Alborz panel is used for exterior and interior use.
This product can be produced in other colors according to the order

Balanced art

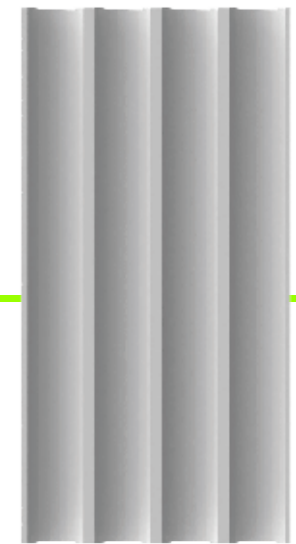
- White 
- Light gray 
- Dark gray 

See in Website
& Order

Omega panel is used for exterior and interiors.
This product can be produced in other colors according to the order

Facade in order

- White
- Light gray
- Dark gray



Omega Panel

60 x 120 cm

- 3 cm thick, armed with ar and micro synthetic fibers
- 3 cm thick, armed with PP fibers

Exposed penel

10

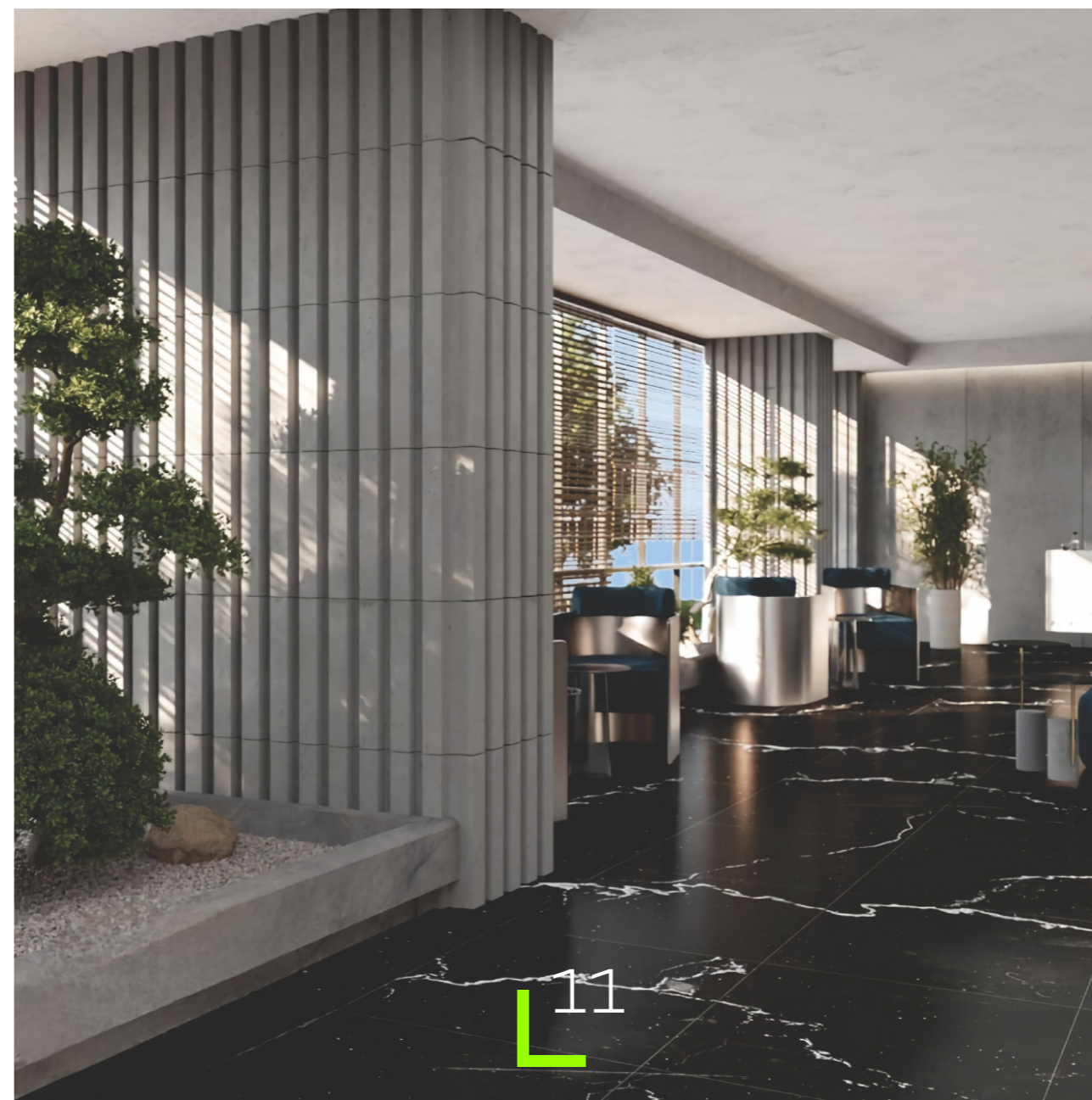
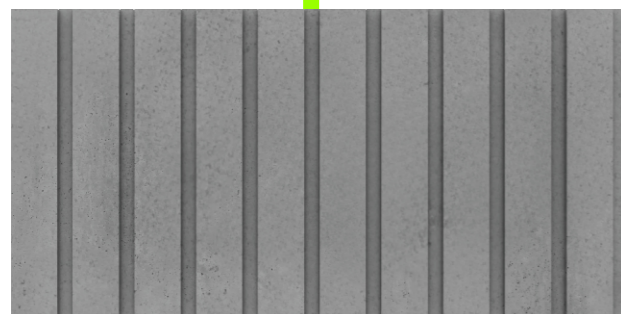
See in Website
& Order

VENUS
stone

Exposed panel

KitKat panel is used for exterior and interiors.
This product can be produced in other colors according to the order

Sweet majesty



KitKat Panel

50 x 100 cm



- 3 cm thick, armed with ar and micro synthetic fibers
- 3 cm thick, armed with PP fibers

- White 
- Light gray 
- Dark gray 

See in Website
& Order

A creation of nature



Zebra panel is used for exterior and interiors.
This product can be produced in other colors according to the order.

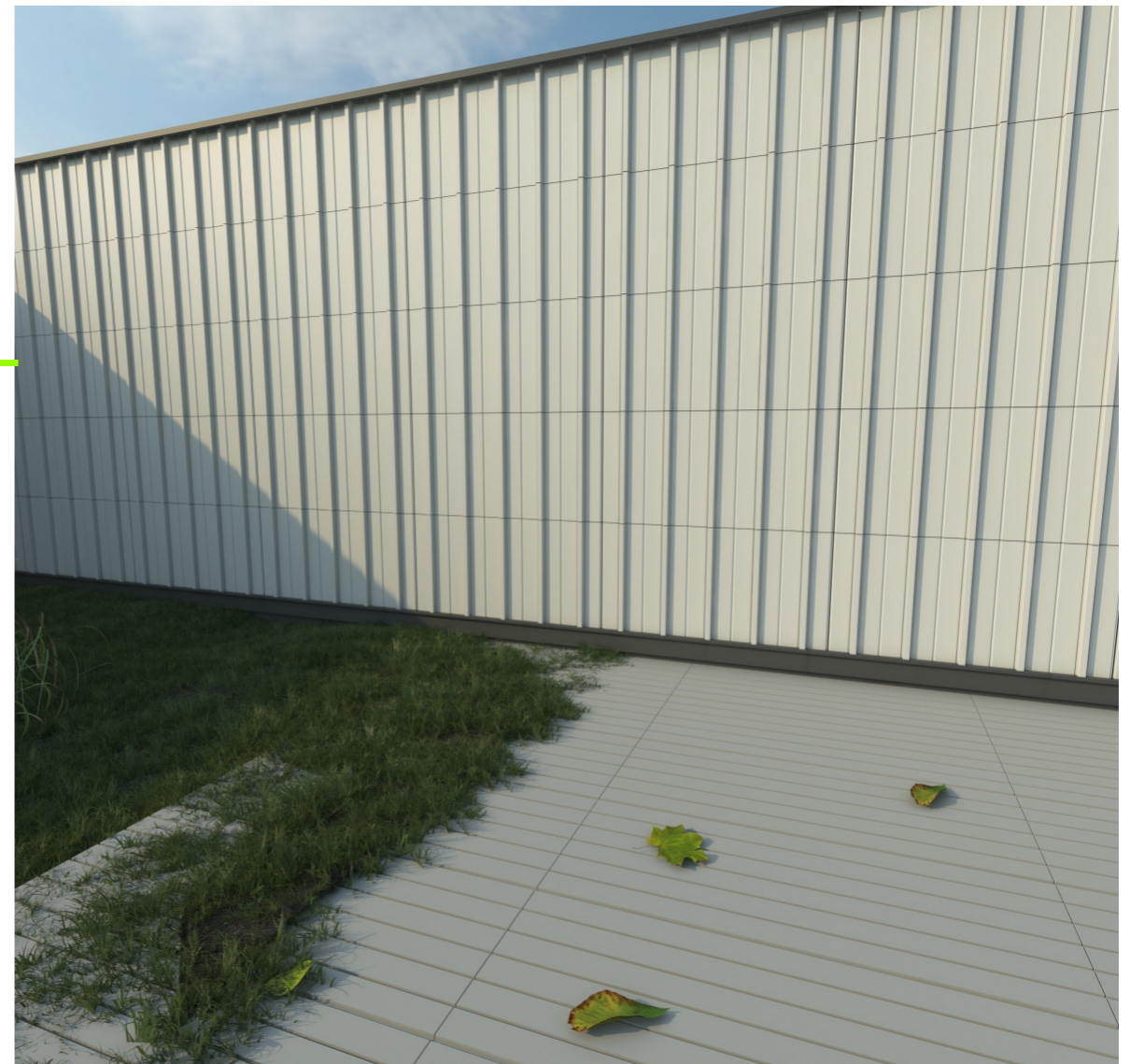
- White 
- Light gray 
- Dark gray 



Zebra Panel

45 x 90 cm

-  3 cm thick, armed with ar and micro synthetic fibers
-  3 cm thick, armed with PP fibers



Exposed panel

See in Website
& Order

Landscape stability

Kerkeri panel is used for exterior and interiors.
This product can be produced in other colors according to the order





Exposed panel



Kerkeri Panel

50 x 100 cm

-  3 cm thick, armed with ar and micro synthetic fibers
-  3 cm thick, armed with PP fibers

See in Website
& Order

Exposed panel

Classic Panel

50 x 90 cm

- 3 cm thick, armed with ar and micro synthetic fibers
- 3 cm thick, armed with PP fibers



- White
- Light gray
- Dark gray



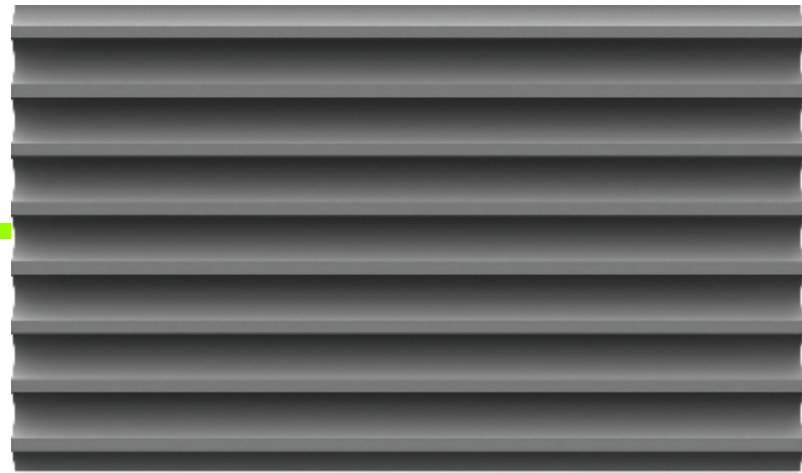
Classic panel is used for exterior and interiors.
This product can be produced in other colors according to the order

Permanent rule

See in Website
& Order

VENUS
stone

Exposed panel



Roya Panel

60 x 100 cm

- 3 cm thick, armed with ar and micro synthetic fibers
- 3 cm thick, armed with PP fibers



- White 
- Light gray 
- Dark gray 



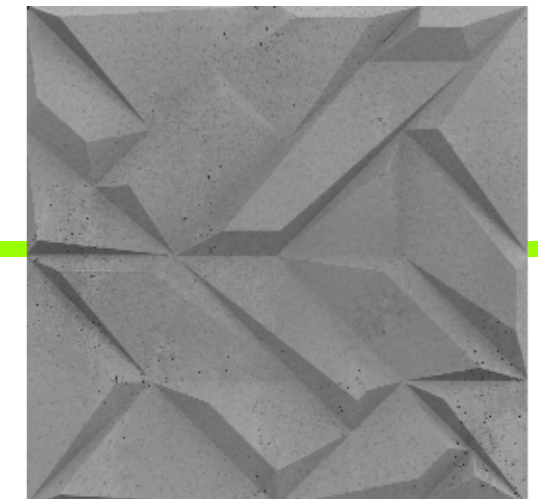
Roya panel is used for exterior and interiors. This product can be produced in other colors according to the order.



Dreamy, solid, stable

See in Website & Order

Exposed penel

- White 
- Light gray 
- Dark gray 



Gisso Panel
 60 x 60 cm
 3 cm thick, armed with ar and micro synthetic fibers
 3 cm thick, armed with PP fibers

A different slope

Gisso panel is used for exterior and interiors.
 This product can be produced in other colors according to the order

See in Website
& Order


Barcode Panel

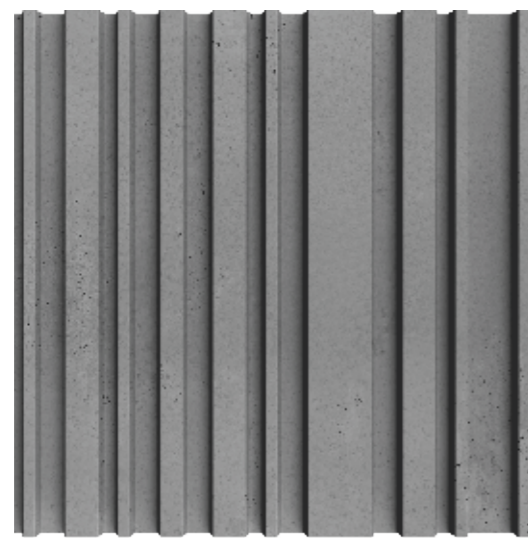
60 x 60 cm

- 3 cm thick, armed with ar and micro synthetic fibers
- 3 cm thick, armed with PP fibers

White 

Light gray 

Dark gray 

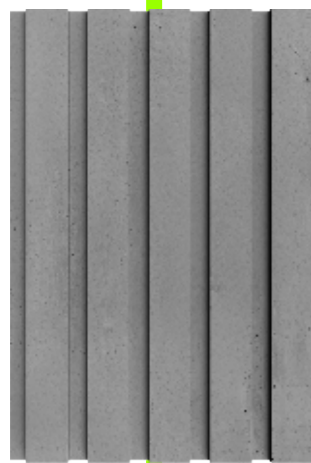


Exposed panel

Accuracy and compliance

Barcode panel is used for exterior and interiors.
This product can be produced in other colors according to the order

See in Website
& Order



KitKat Panel

40 x 60 cm

- 3 cm thick, armed with ar and micro synthetic fibers
- 3 cm thick, armed with PP fibers

White



Light gray



Dark gray



Sweet majesty

Exposed panel

KitKat panel is used for exterior and interiors.
This product can be produced in other colors according to the order

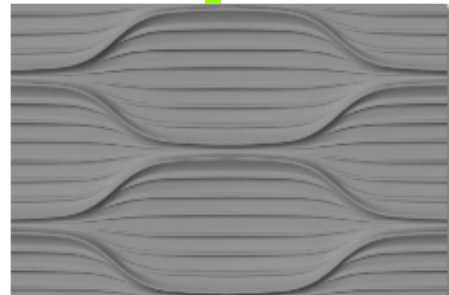
See in Website
& Order



Antiqu Panel

38 x 62 cm

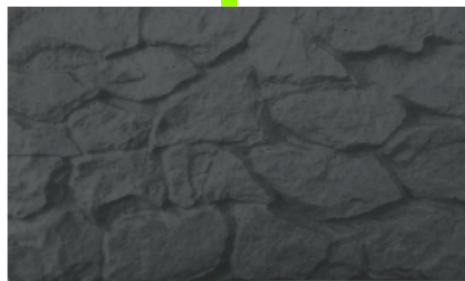
- 3 cm thick, armed with ar and micro synthetic fibers
- 3 cm thick, armed with PP fibers



Abshar Panel

40 x 60 cm

- 3 cm thick, armed with ar and micro synthetic fibers
- 3 cm thick, armed with PP fibers



Sakhrei Panel

38 x 55 cm

- 3 cm thick, armed with ar and micro synthetic fibers
- 3 cm thick, armed with PP fibers



Antiqu/Tina/Sakhrei panel is used for exterior and interiors.
This product can be produced in other colors according to the order

A change in style

White

Light gray

Dark gray

Exposed penel

See in Website & Order

Exposed panel

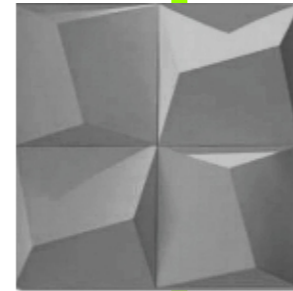
Yaghoot/Abshar/Ajornama panel is used for exterior and interiors.
This product can be produced in other colors according to the order

A change in style

Tina Panel

40 x 40 cm

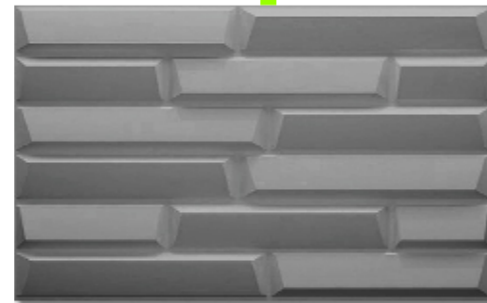
- 3 cm thick, armed with ar and micro synthetic fibers
- 3 cm thick, armed with PP fibers



Yagoot Panel

40 x 60 cm

- 3 cm thick, armed with ar and micro synthetic fibers
- 3 cm thick, armed with PP fibers




Ajornama Panel


40 x 60 cm

- 3 cm thick, armed with ar and micro synthetic fibers
- 3 cm thick, armed with PP fibers



White 

Light gray 

Dark gray 



See in Website
& Order

GFRC panel

Travers/Dentelle/Rubis panel is used for exterior and interiors.
This product can be produced in other colors according to the order

Travers Panel

60 x 60 cm

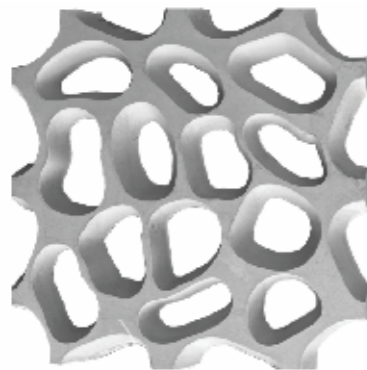
■ 4.5 cm thick, armed with ar and micro synthetic fibers



Dentelle Panel

70 x 70 cm

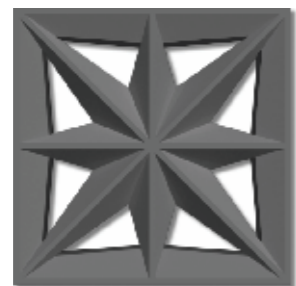
■ 4.5 cm thick, armed with ar and micro synthetic fibers




Rubis Panel


50 x 50 cm

■ 4.5 cm thick, armed with ar and micro synthetic fibers



White 

Light gray 

Dark gray 

The apertures know

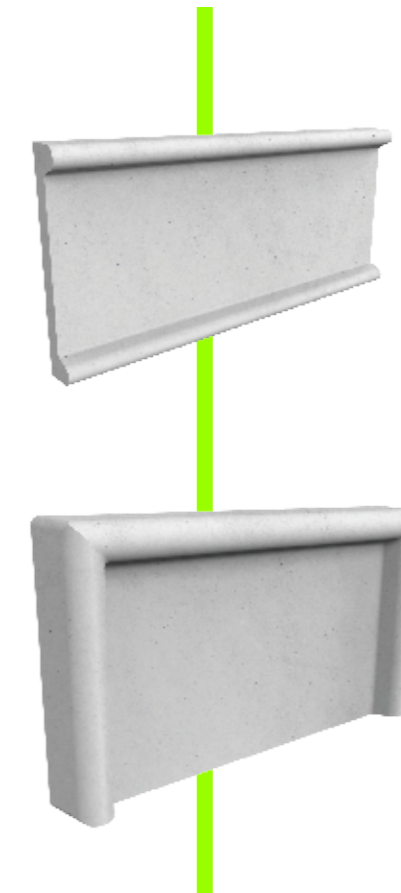


See in Website
& Order

VENUS
stone

- White 
- Light gray 
- Dark gray 

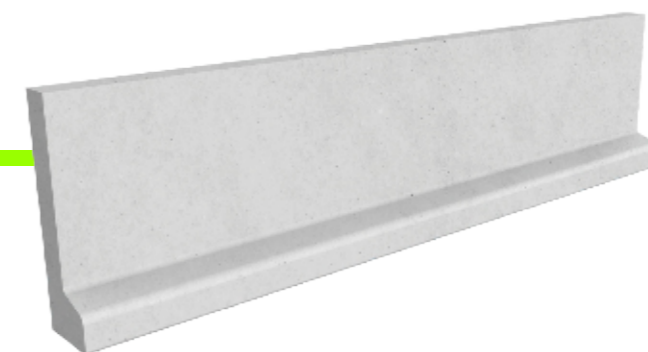
Flashing cover



facade protector

Flashing cover panel is used for exterior and interiors.
This product can be produced in other colors according to the order

Flashing cover
100 x 45 x 7 cm
100 x 33 x 7 cm
60 x 33 x 7 cm



See in Website
& Order

Flooring



A constant acquaintance

Leather panels are used for exterior and interiors.
This product can be produced in other colors according to the order



Leather Panels

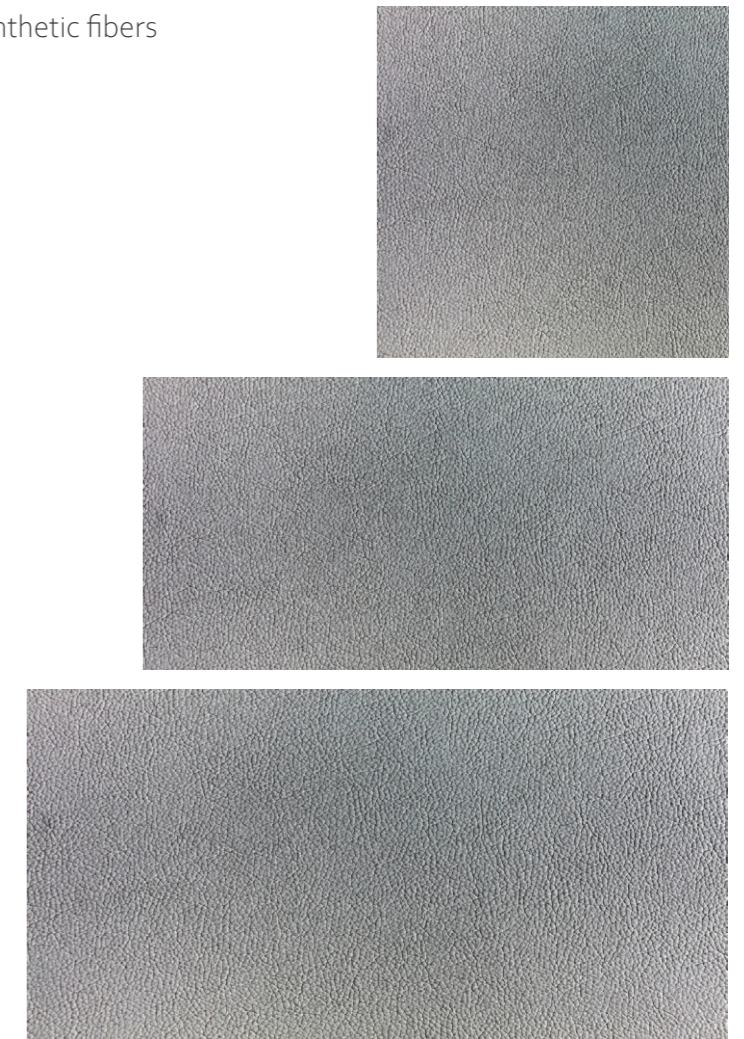
50 x 150 cm
60 x 120 cm
50 x 120 cm
50 x 100

40 x 100 cm
40 x 80 cm
20 x 82 cm
15 x 120

100 x 100 cm
80 x 80 cm
70 x 70 cm
60 x 60

- 5 cm thick, armed with ar and micro synthetic fibers
- 4 cm thick, armed with PP fibers

- White 
- Light gray 
- Dark gray 



See in Website
& Order

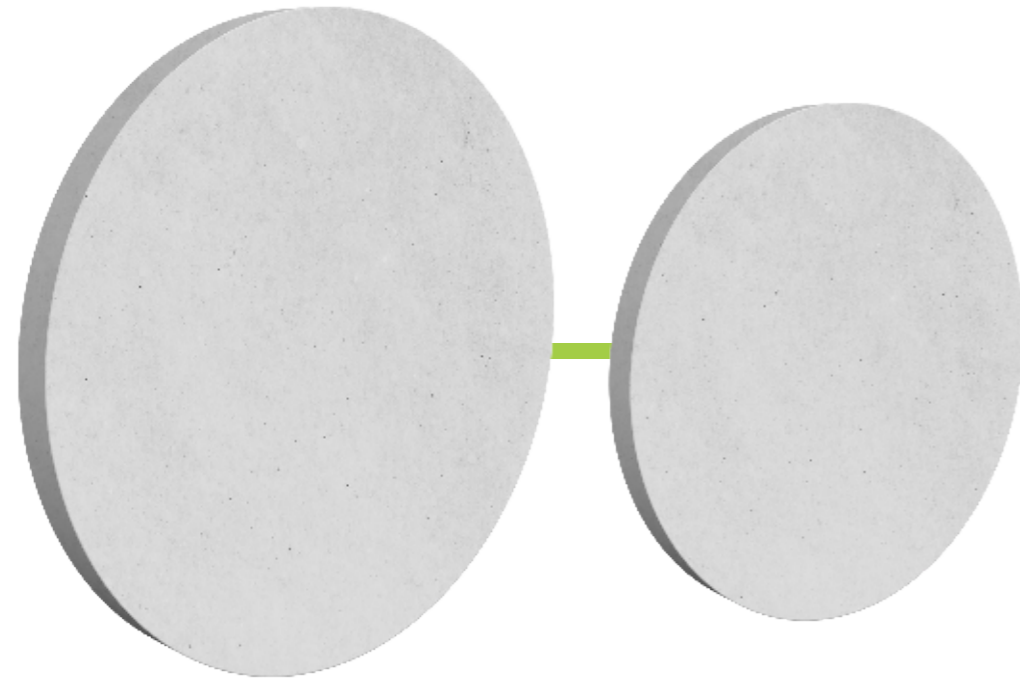
Round panel is used for exterior and interiors.
This product can be produced in other colors according to the order



stable cycle

- White 
- Light gray 
- Dark gray 

Round Panel

55 x 55 cm
40 x 40 cm



-  5 cm thick, armed with ar and micro synthetic fibers
-  4 cm thick, armed with PP fibers

Flooring



See in Website
& Order



- 5 cm thick, armed with ar and micro synthetic fibers
- 4 cm thick, armed with PP fibers

- White 
- Light gray 
- Dark gray 



Oval Panel
60 x 120 cm

Oval panel is used for exterior and interiors.
This product can be produced in other colors according to the order

A different cycle

Flooring




Malon panel is used for exterior and interiors.
This product can be produced in other colors according to the order

A piece of the mountain

- 5 cm thick, armed with ar and micro synthetic fibers
- 4 cm thick, armed with PP fibers

White 

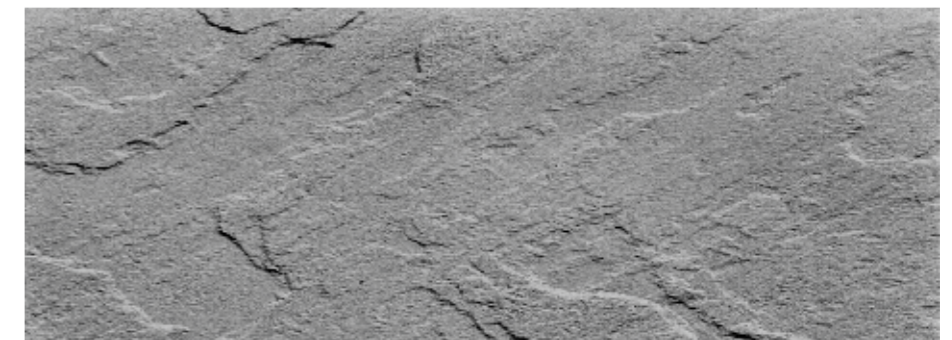
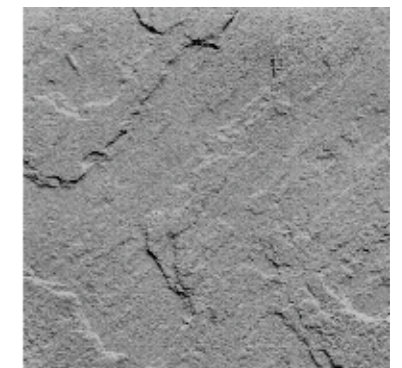
Light gray 

Dark gray 

Flooring

Malon Panel

55 x 150 cm
50 x 100 cm
60 x 60 cm
40 x 60 cm






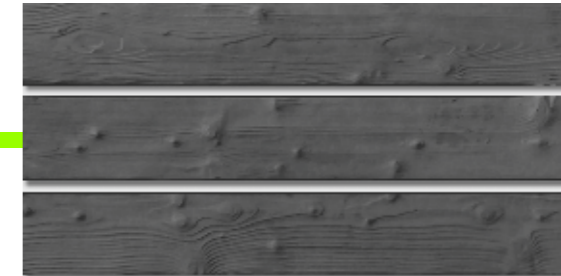
See in Website
& Order

Flooring

Wood Panel
50 x 120 cm
12.5 x 80 cm

- White 
- Light gray 
- Dark gray 

-  5 cm thick, armed with steel mesh
-  4 cm thick, armed with PP fibers
-  2.5 cm thick without fiber



Warm like nature

Wood panel is used for exterior and interiors.
This product can be produced in other colors according to the order

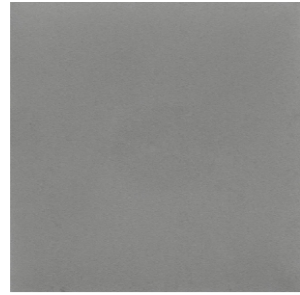


See in Website
& Order

Flooring

Charmi Panel

50 x 50 cm
2.5 cm thick



Tanabi Panel

50 x 50 cm
2.5 cm thick



California Panel

40 x 40 cm
2.5 cm thick



Dorghab Panel

40 x 40 cm
2.5 cm thick



Parseh Panel

40 x 60 cm
2.5 cm thick

Charmi Panel

30 x 60 cm
2.5 cm thick



White 

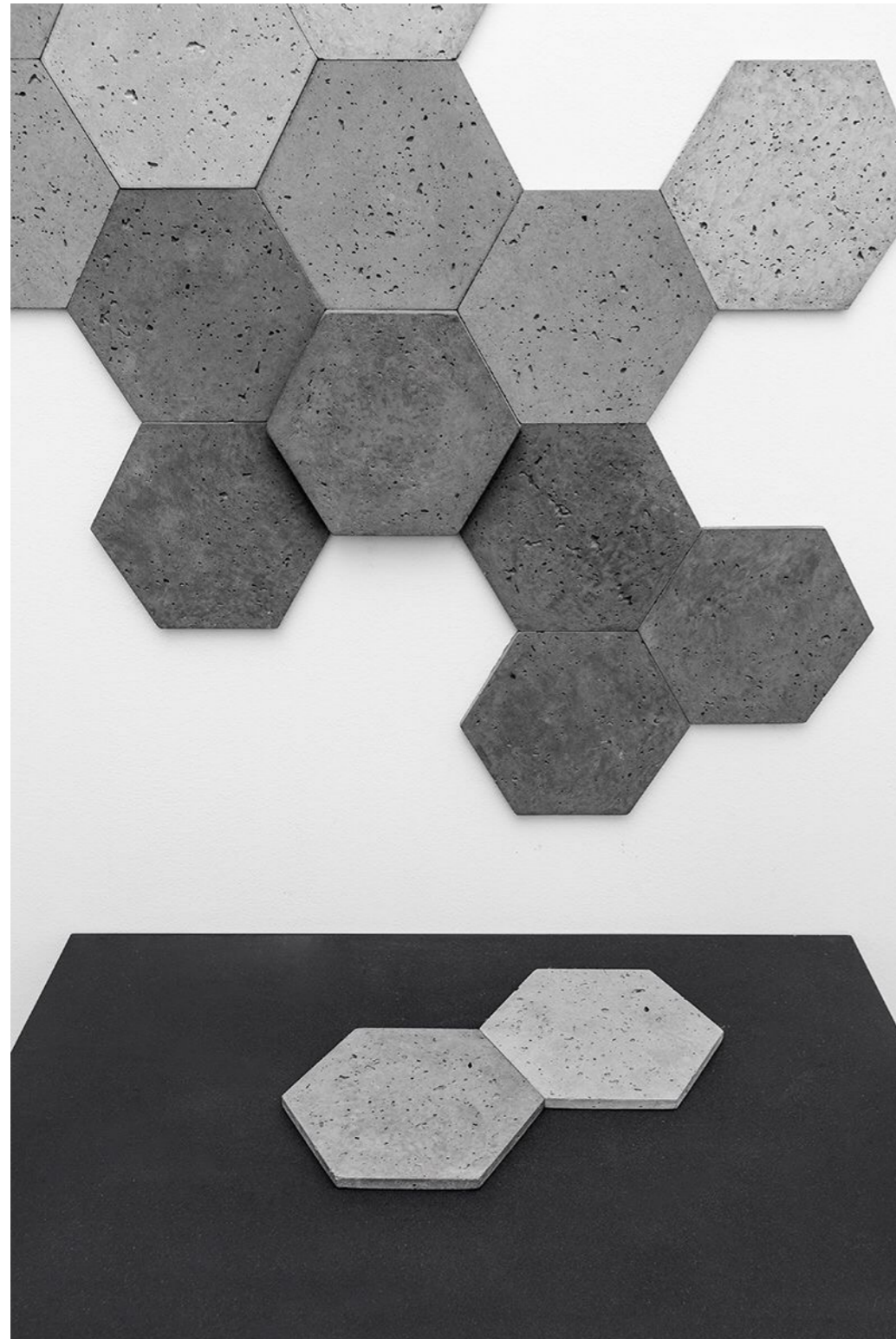
Light gray 

Dark gray 

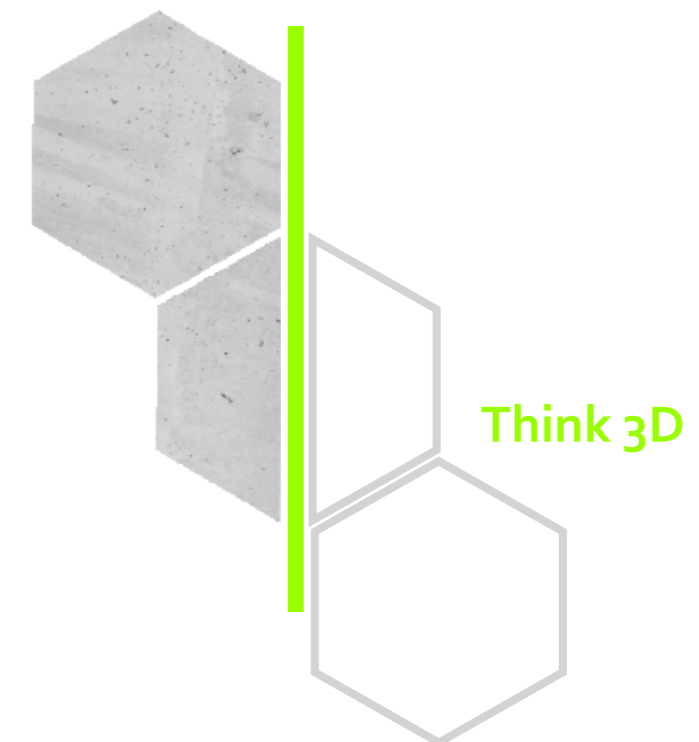
step consolidation




Flooring panel is used for exterior and interiors.
This product can be produced in other colors according to the order

See in Website
& Order



Flooring



- White 
- Light gray 
- Dark gray 

Avin Panel
30 x 30 cm

 3 cm thick, armed with ar and micro synthetic fibers

Live in three dimensions

Avin panel is used for exterior and interiors.
This product can be produced in other colors according to the order

See in Website
& Order

Flooring

Think 3D

Chidaneh Panel

10 x 50 cm

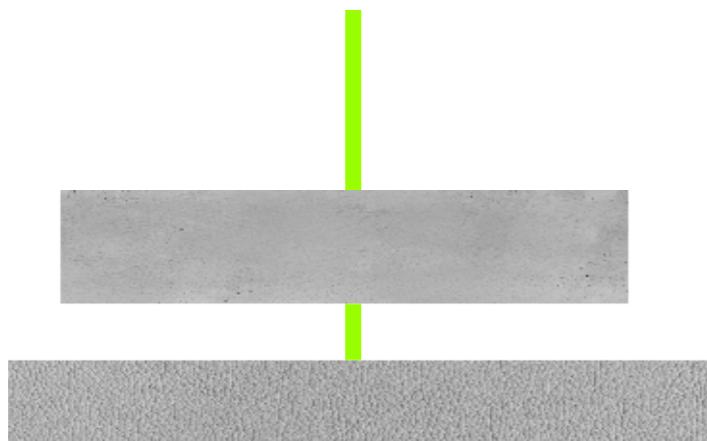
7 x 60 cm

■ 2.5 & 4 cm thick, armed with ar and micro synthetic fibers

White 

Light gray 

Dark gray 



Make your art

Chidaneh panel is used for exterior and interiors.
This product can be produced in other colors according to the order

See in Website
& Order

30

VENUS
stone


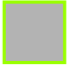

Creativity in clay


Brick panel is used for exterior and interiors.
This product can be produced in other colors according to the order



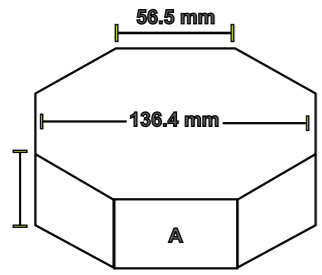
Flooring



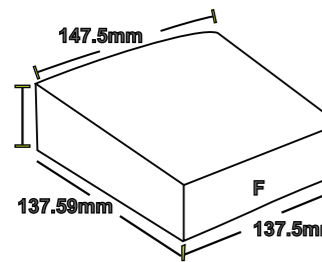
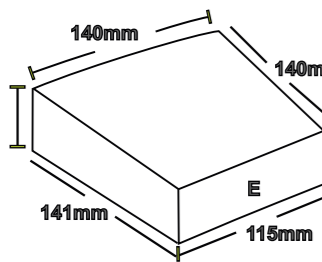
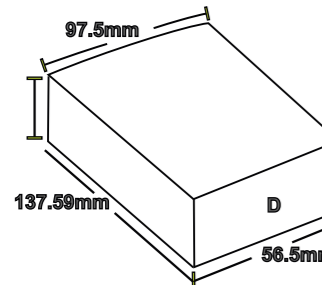
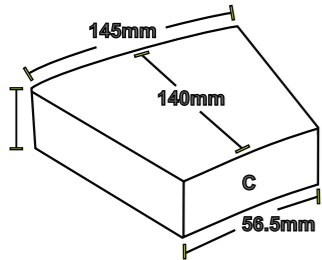
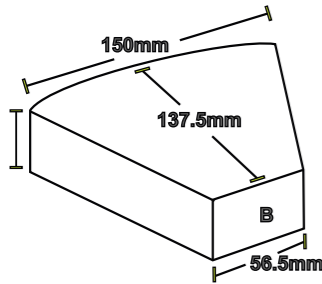
- White 
 - Light gray 
 - Dark gray 
- Brick Panel**
10 X 20 cm

 4 cm thick, armed with ar and micro synthetic fibers

See in Website
& Order



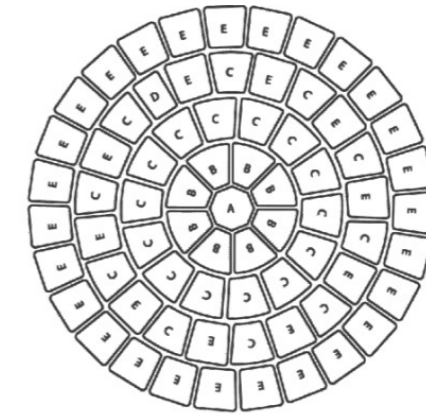
Cobble Panel



Cobble panel is used for exterior and interiors.
This product can be produced in other colors according to the order

The art of spinning

Flooring



C5 Cobble Stone

Circle1		1
Circle1		8
Circle1		14
Circle1		10+1+10
Circle1		27
Total		1+8+14+21+27 = 71

White

Light gray

Dark gray

4 cm thick, armed with ar and micro synthetic fibers

See in Website
& Order



Accessories

See in Website
& Order



- White
- Light gray
- Dark gray

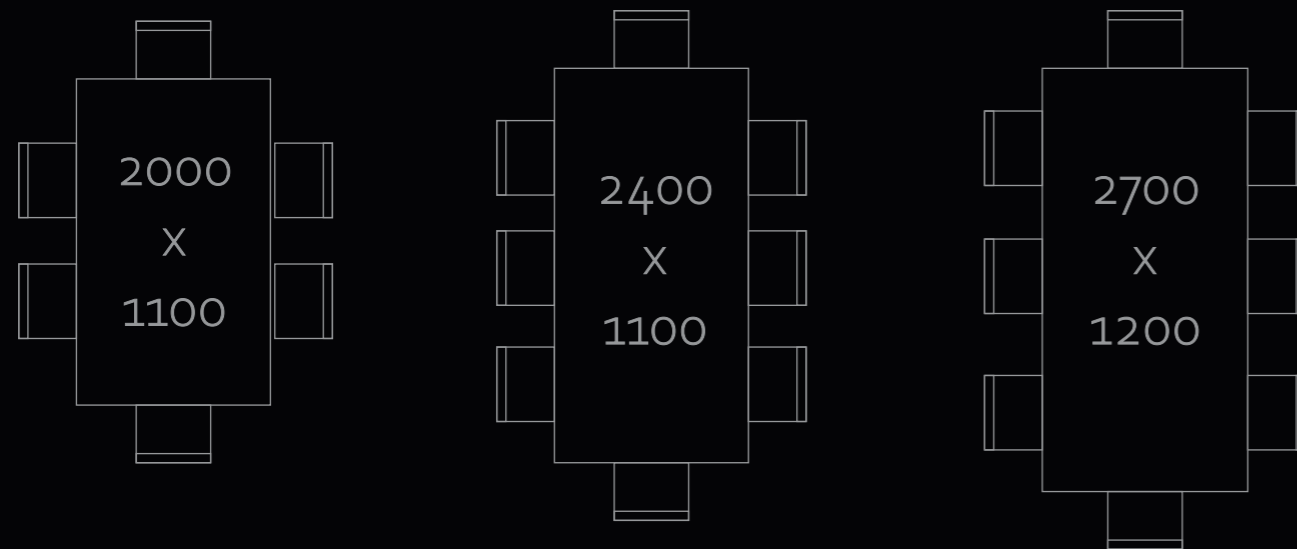


Art of concrete

Concrete Table is used for exterior and interiors.
This product can be produced in other colors according to the order

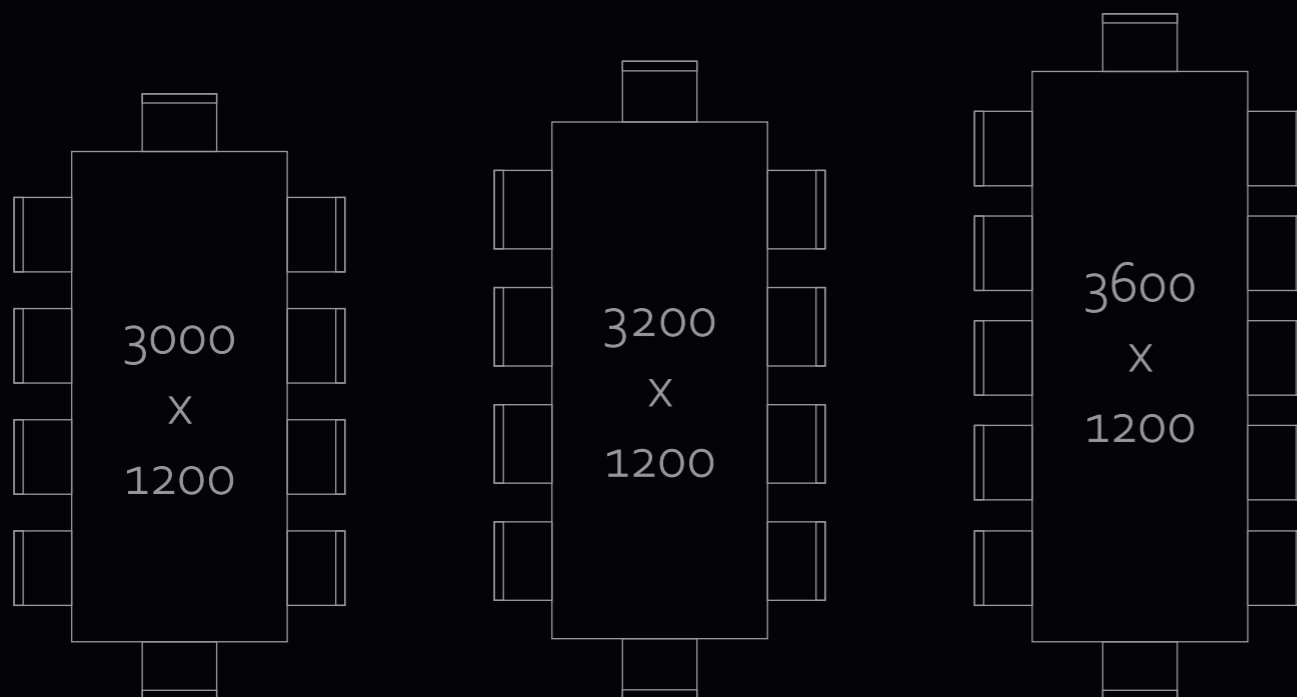
Concrete Table

See in Website
& Order



SEATING PLACEMENT INFORMATION

This guide is based on comfortable space and slightly larger than average chairs, the spacing mostly depends on the chair size. If you have smaller size chairs you should be able to fit an extra 2 seats on each table size with your space slightly more compact.



LIGHTWEIGHT CONCRETE

Concrete is one of the most influential, flexible and dynamic materials in the modern world. The natural imperfect texture of its surface radiates a calming and organic feel to contemporary spaces and creates a unique atmosphere with a element of emotion. Being a breathing material moisture is naturally absorbed and released as the surrounding humidity changes making this a hygroscopic living material.

All the materials used are sourced from nature and also cleaning up our precious environment at the same time. The authentic appearance of our concrete is a trademark and is not compromised to adapt to the protective and durability function of the product. Our mission of preserving this authenticity and character is well reflected in all our concrete products, essentially bringing concrete surfaces to life. Glass fibre reinforced concrete has led to a revolution in furniture making as a durable and lightweight sustainable solution.

CONCRETE DNA

venus tables are produced with a well mastered manufacturing process that combines intelligent technologies with the finishing touch of human hands. This wonder material is made from Ultra high-performance concrete [UHPC] using a unique formula made up from minerals provided by nature.

Concrete Pot

- 160 x 50 x 50 cm
- 120 x 25 x 30 cm
- 60 x 60 x 50 cm
- 50 x 50 x 50 cm
- 20 x 20 x 20 cm
- 100 x 60 x 30 cm
- 70 x 25 x 25 cm



- White
- Light gray
- Dark gray



Concrete Pot

An ornament for nature

Concrete pot is used for exterior and interiors.
 This product can be produced in other colors according to the order
 This product can be produced in other size according to the order

[See in Website & Order](#)

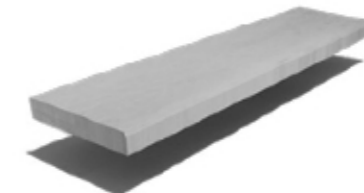


Concrete Stairs

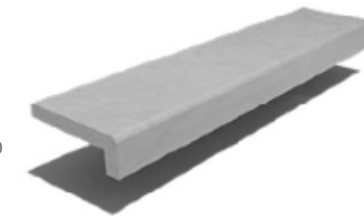


120 x 35 x 4 - 120 x 15 x 3

130 x 35 x 7




130 x 35 x 10




130 x 35 x 20



White 

Light gray 

Dark gray 

concrete step

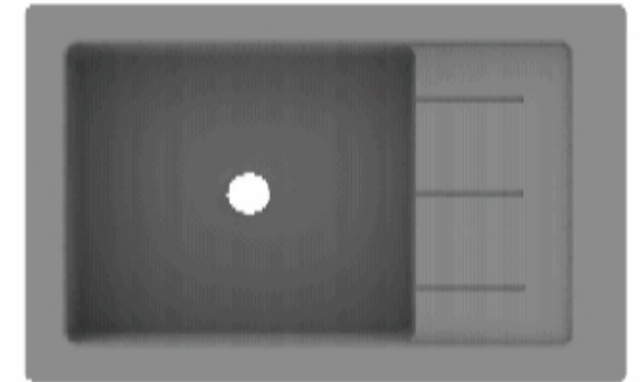
Concrete Stairs is used for exterior and interiors.
This product can be produced in other colors according to the order

Accessories

See in Website & Order

Concrete Sink

Concrete Sink
45 x 80 cm
45 x 60 cm



- White
- Light gray
- Dark gray

Home art

Concrete Sink is used for exterior and interiors.
This product can be produced in other colors according to the order.

See in Website
& Order



Design & Implementation

One of Venus Stone's services is providing interior and exterior design services for villas, commercial centers, residential and landscaping.



Exposed concrete tile installation methods are generally divided into dry, adhesive, and mortar installation methods. The common methods of which are summarized below.

- 1** Installation of exposed concrete tiles by mortar method
In this method, the tiles are installed with sand and cement mortar and concrete adhesive. First, using the wires that are installed in the back of the tile to pass the wire of the scope. The scope is created in the tile and offer butting some of them together. The slurry is poured behind it. The minimum thickness of the slurry should be 3 cm.
- 2** Installing exposed concrete tiles using powder adhesives
In this method, the tiles are installed with powder adhesives (two parts). In this method, the wall is first covered with a layer of primer (this step depends on the type of wall). Then make a groove in the back of the tiles for more contact between the tile and the powder adhesive, and then rub the prepared powder tile glue behind the tile and lick it to the wall.
- 3** Installation of exposed concrete tiles using chassis and installation fittings
In this method, two rows of vertical and horizontal metal profiles are used, in which the vertical profiles are depending on the shop drawing, and the horizontal profiles are installed on the vertical profiles based on the placement of fasteners. In this method, during the production of several plates, the tile is placed on it to place the nut to be executed using bolts to horizontal profiles.
- 4** Installation of the exposed concrete tile using metal substructure and two-component epoxy based adhesive
In this method, the profiles are installed vertically and horizontally. To install the tile in this method, make diagonal slits in the back of the tile to a depth of about one centimeter in the shape of a mark. and then mix the two-component adhesive well and apply it on the slit in 5 or 6 parts of the tile with a spatula. Then sand the part of the chassis on which the glue is to be placed and stick the tile on the profile.

5 Installing exposed concrete tile using metal substructure and screwing the tile

In this method, Bolt design tiles with page space should be used. First, the vertical profiles in the direction of the bolt holes on the main wall are connected by a rolling bolt or base plate and welded. The tiles are then screwed to the cans with four screws and washers.

6 Install exposed concrete tile using screws and dowels

In this method, bolt design tiles should be used and the substructure wall should be smooth and vertical so that there is no need to adjust the tile by placing the tile on the wall. The executed surface should have an acceptable smoothness and verticality (that is, there is no need to level the wall with mortar, etc.). Then, with screws and dowels. Then screw the tile from the bolt holes to the substructure wall with screws and dowels.

7 Installing exposed concrete tiles using metal substructure and pins and wedges

In this method, two rows of metal profiles (or any screwable metal element) are used vertically and horizontally. The vertical profiles depending on the shop drawing are installed, and the horizontal profiles are installed and welded based on the placement on the vertical profiles. Tiles do not require any elements to be installed in this method, and the tiles are screwed to the horizontal elements using several pins and wedges.

VENUS
stone

VENUS
stone



روش‌های نصب تایل بتن اکسپوز به صورت کلی به سه دسته نصب خشک، چسبی و ملاتی تقسیم می‌گردد که روش‌های متداول آن به صورت خلاصه در ادامه آورده شده است.

۱ نصب تایل بتن اکسپوز به روش ملاتی

در این روش نصب تایل‌ها با ملات ماسه و سیمان و چسب بتن انجام می‌شود ابتدا با استفاده از مفتول‌هایی که به منظور عبور سیم اسکوپ در پشت تایل تعبیه شده اسکوپ در تایل ایجاد کرده و پس از چیدن تعدادی در کنار هم پشت آن را دوغاب ریخته می‌شود حداقل ضخامت دوغاب بایستی ۳ سانتی متر باشد.

۲ نصب تایل بتن اکسپوز با استفاده از چسب‌های پودری

در این روش نصب تایل‌ها با چسب‌های پودری (دوجزئی) اجرا می‌شود در این روش ابتدا دیوار را با یک لایه پرایمر پوشش داده می‌شود انجام این مرحله به جنس و شرایط دیوار مورد نظر بستگی دارد. سپس پشت تایل‌ها را به منظور درگیری و تماس بیشتر بین تایل و چسب شیار ایجاد کرده و سپس چسب کاشی پودری آماده شده را پشت تایل کشیده و به دیوار بچسبانید.

۳ نصب تایل بتن اکسپوز با استفاده از شاسی کشی و یراق آلات نصب

در این روش از دوردیف پروفیل فلزی عمودی و افقی استفاده می‌شود که پروفیل‌های عمودی بستگی به شاپ انجام شده نصب می‌شوند و پروفیل‌های افقی بر اساس جایگذاری یراق و با پلیت پشت تایل روی پروفیل‌های عمودی نصب می‌شوند در این روش پشت تایل در هنگام تولید چند پلیت به منظور جایگذاری مهره به منظور اجرا به وسیله پیچ و مهره و به پروفیل‌های افقی بر روی آن کار گذاشته می‌شود.

۴ نصب تایل بتن اکسپوز با استفاده از زیرسازی فلزی و چسب دو جزئی پایه اپوکسی

در این روش قوطی‌ها به صورت عمودی و افقی شاسی کشی می‌شود برای نصب تایل در این روش پشت تایل را شکاف‌هایی موربی به عمق حدود یک سانتی متر به شکل علامت # ایجاد کرده و سپس چسب دو جزئی پایه اپوکسی را به خوبی مخلوط کرده و روی قسمت شکاف خورده در ۵ یا ۶ قسمت از تایل با کاردک کشیده می‌شود سپس قسمتی از شاسی آهنی را که چسب قرار است روی آن قرار گیرد را ساب زده و تایل را روی شاسی بچسبانید.

VENUS
stone

۵ نصب تایل بتن اکسپوز با استفاده از زیرسازی فلزی و پیچ کردن تایل

در این روش بایستی از تایل‌های طرح Bolt استفاده شود که جای پیچ در آن‌ها کار گذاشته شده است. ابتدا قوطی‌های عمودی در راستای حفره‌های بولت روی دیوار اصلی بوسیله رول بولت با بیس پلیت و جوش متصل می‌شوند، سپس تایل‌ها به وسیله چهار عدد پیچ سرمته و واشر به قوطی‌ها پیچ می‌شوند.

۶ نصب تایل بتن اکسپوز با استفاده از پیچ و رول پلاک

در این روش بایستی از تایل‌های طرح Bolt استفاده گردد و دیوار زیر کار باید صاف و شاقول باشد به طوری که نیاز به رگلاژ کردن تایل نباشد و با قرار دادن تایل به دیوار، سطح اجرا شده دارای صافی و شاقولی قابل قبولی باشد (یعنی دیگر نیازی به هم سطح سازی و تراز کردن دیوار با چسب و ... نباشد.) و سپس با پیچ و رولپلاک تایل را از محل حفره‌های بولت به دیوار زیرسازی پیچ کرد.

۷ نصب تایل بتن اکسپوز با استفاده از زیرسازی فلزی و پین و کوه

در این روش از دوردیف پروفیل فلزی (و یا هر المان فلزی قابل پیچ شدن) عمودی و افقی استفاده می‌شود که پروفیل‌های عمودی بستگی به شاپ انجام شده، نصب می‌شود و پروفیل‌های افقی بر اساس جاگذاری روی پروفیل‌های عمودی نصب و جوش می‌شوند. تایل‌ها در این روش نیاز به هیچ المانی برای نصب ندارند و تایل‌ها با استفاده از چند پین و کوه به المان‌های افقی پیچ می‌شود.

Soil Creativity

VENUS

stone

- دوام بالا در برابر تغییرات شرایط جوی و محیطی و تابش مستقیم نور خورشید و محیط‌هایی بارطوبت بسیار بالا

- سرعت بالا در اجرا و قابلیت اجرا در تمامی فصول سال و به روش‌های مختلف همچون خشک، چسبی و ملاتی

- قابلیت تولید در ابعاد و طرح‌ها متنوع و دلخواه و پیاده‌سازی سلیق در طرح و نقش‌های گوناگون

- امکان اجرا ترکیبی با دیگر مصالح همانند چوب، آجر، سنگ، شیشه و غیره و خلق جلوه‌های بصری زیبا در نما

- قیمت مناسب و قابل رقابت با سایر موارد مورد استفاده

- قابل رنگ پذیری مناسب سطح بتن یا رنگ اکریلیک

- مقاوم در مقابل خط و خش

Advantages

High durability against changes in weather and environmental conditions and direct sunlight and environment with very high humidity

High speed in installation and applicability in all seasons and different methods such as dry adhesive and mortar.

Ability to produce in various and designed dimensions and designs and implement tastes in various design.

Ability to perform a combination with other materials such as wood brick, stone, glass and create beautiful visual effects in the facade. Reasonable and competitive price with other materials used for facades and floors.

Washable and suitable for painting concrete surfaces

Applications

Used as floor covering, exterior walls, interior and decorative surface

Used in combination with other building materials with modern architecture on the facade and floor of the building.

Use for landscaping of villas and building.

Use in walls of bridges, underpasses, tunnels, dams and

- استفاده به عنوان پوشش کف، دیوارهای خارجی، داخلی و سطوح دکوراتیو

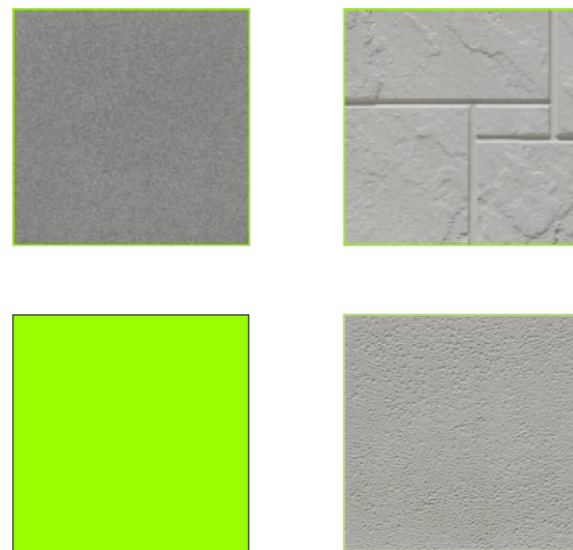
- استفاده به صورت ترکیبی در نما و کف با سایر مواد ساختمانی با معماری مدرن

- استفاده به منظور محوطه‌سازی و فضای سازی ویلاها و ساختمان‌ها

- استفاده در دیواره پل‌ها، تونل‌ها، سدها و ...

کاربردها

ایستگاه



Soil Creativity

Technical values

Product name	size	Number per square meter	Weight of each piece (5 cm)	Weight per square meter (5cm)	Weight of each piece (4 cm)	Weight per square meter (4 cm)
round	Diagonal 55	4	21	85	18	75
	Diagonal 40	6.25	13	85	12	75
oval	120x60	1.5	56	85	50	75
Leather panels	150x50	1.33	64	85	56	75
	120x60	1.38	61	85	54	75
	120x50	1.66	51	85	45	75
	50x100	2	42	85	37	75
	40x100	2.5	34	85	30	75
	40x80	3.12	27	85	24	75
	100x100	1	85	85	75	75
	80x80	1.56	54	85	48	75
	70x70	2	42	85	37	75
	60x60	2.77	30	85	27	75
	120x50	1.66	51	85	45	75
82x20	6	14	85	12	75	
wood	50x120	1.66	51	85	45	75
malon	55x150	1.2	70	85	62	75
	50x100	2	42.5	85	37	75
	60x60	2.77	30	85	27	75
	40x60	4.2	20	85	17	75
Bolt panels	60x120	1.38	39	55		
	50x100	2	27	55		
	50x90	2.2	25	55		
	45x80	2.6	21	55		
	50x50	4	13	55		
Nika	60x120	1.38	39	55		
Bamboo	60x100	1.66	33	55		
Nil	60x120	1.38	39	55		
Alborz	25x120	3.3	16	55		
Omega	60x120	1.38	39	55		
Kitkat	50x100	2	27	55		
zebra	45x90	2.5	22	55		
Kerkeri	50x100	2	27	55		
Classic	50x90	2.2	25	55		
Roya	60x100	1.66	33	55		
Gisoo	60x60	2.77	20	55		
Barcode	60x60	2.77	20	55		
travers	60x60	2.77	23	64		
dentelle	70x70	2	32	64		
rubis	50x50	4	16	64		

venusstone.ir

+98 264 45 64 138

+98 938 302 9123

VENUS stone st,
Khalijfars Blv,
Payam Blv, Karaj - IRAN